

ADN

ARCHITECTURE
& DESIGN
NETWORK
STUDIO

**"MULTIDISCIPLINARY DESIGN
STUDIO: ARCHITECTS, INTERIOR
DESIGNERS, LANDSCAPE
DESIGNERS, URBANISTS,
PRODUCT DESIGNERS,
STRUCTURAL ENGINEERS,
CIVIL, MEP AND ENERGY
EXPERTS; GEOLOGISTS,
AGRONOMISTS, LAWYERS AND
FINANCIAL EXPERTS"**

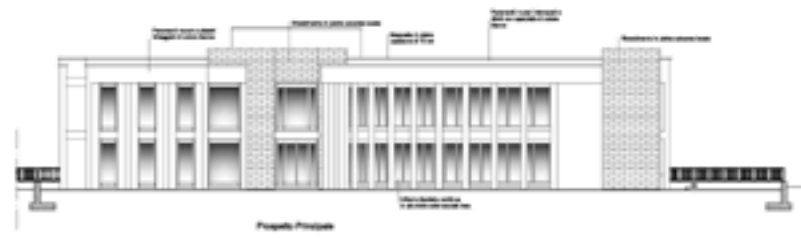
ADN ARCHITECTURE &
DESIGN
NETWORK
STUDIO

DIRECTIONAL CENTRE
"EDES"
CASTELLANA GROTTE
BA





**DIRECTIONAL CENTRE
"EDES"
CASTELLANA GROTTE
BA**



DESIGN
PG > 3

ARCHITECTURE
RENOVATION & RESTORATION
INTERIOR DESIGN
LANDSCAPE DESIGN
PRODUCT DESIGN
URBAN DESIGN

SPECIALIZED
DESIGN PG > 48

STRUCTURAL DESIGN
ELECTRICAL DESIGN
MECHANICAL & PLUMBING DESIGN
LIGHTING DESIGN
LANDSCAPE DESIGN
SERVICE DESIGN

TECHNICAL
ADVICE PG > 56

LEGAL COUNSEL & CONTRACT ADVICE
FINANCE FACILITIES & CAPITALS
AGRONOMIC SERVICES
GEOLOGICAL INVESTIGATIONS
HEALTH & SAFETY ADVICE
ENVIRONMENTAL CONSULTING SERVICES
TOURISM CONSULTING SERVICES

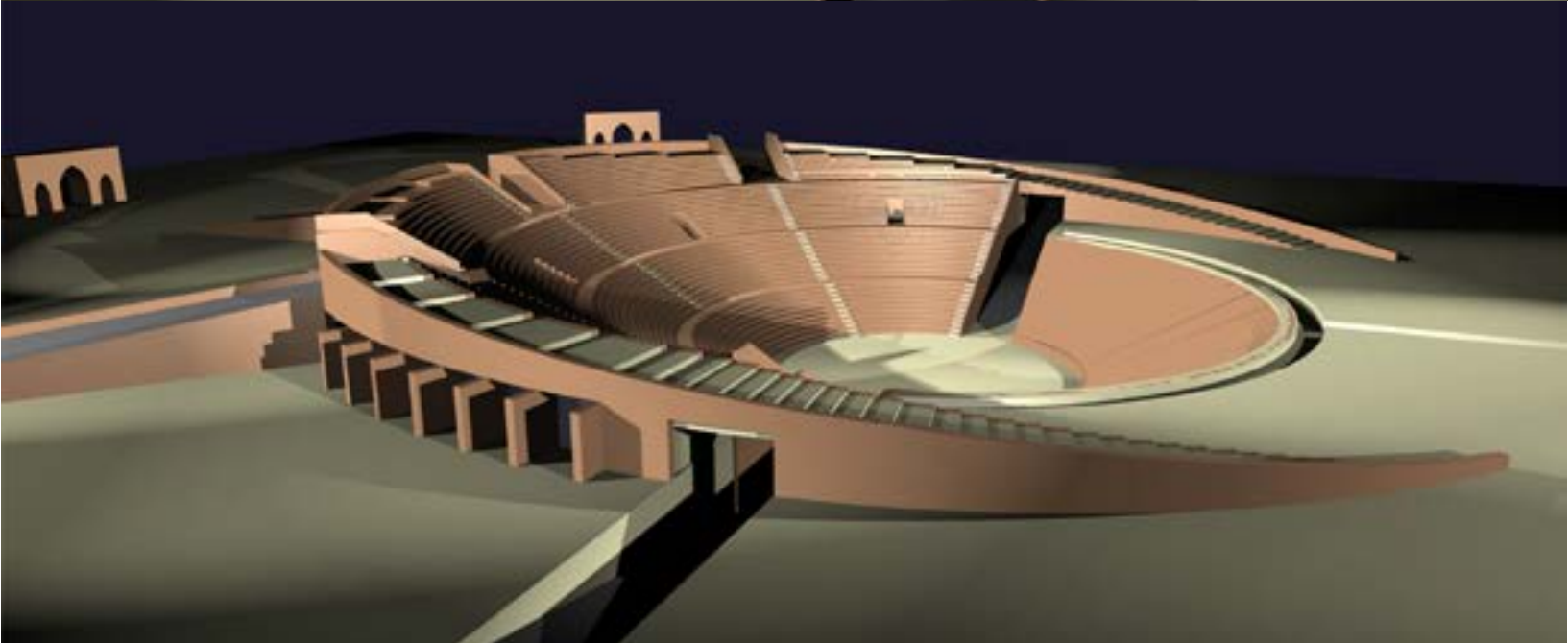
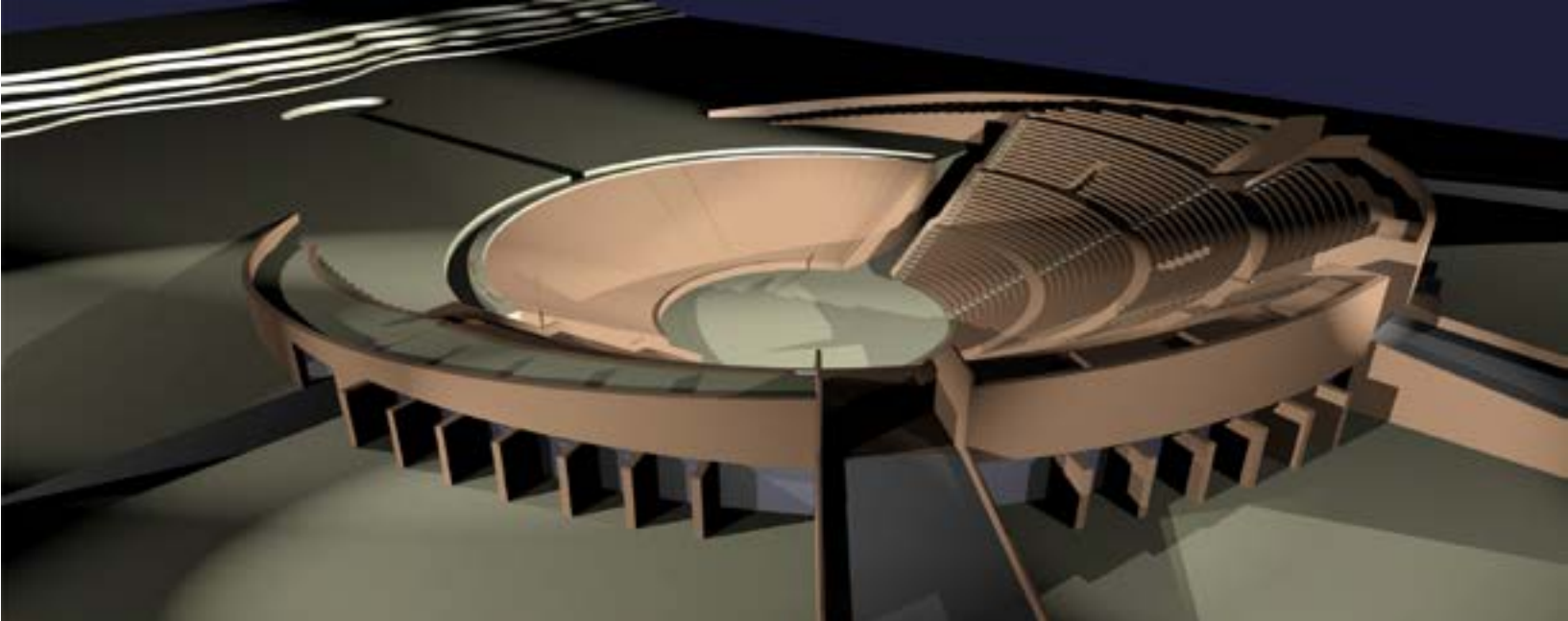
CERTIFICATIONS
AUDITS PG > 62

FIRE PREVENTION CERTIFICATION
ENERGY CERTIFICATION
HEALTH & SAFETY CERTIFICATION
ENVIRONMENTAL CERTIFICATION
ACUSTICAL ANALYSIS & CERTIFICATION

DESIGN DEPARTMENT

ARCHITECTURE
INTERIOR DESIGN
LANDSCAPE DESIGN
RENOVATION & RESTORATION
PRODUCT DESIGN
URBAN DESIGN

"NO MATTER THE SCALE OF THE PROJECT:
IN OUR DESIGN EVERY LITTLE THING BECAME
RELEVANT. SOMETIME THAT LITTLE DETAIL
DEFINE THE ALL QUALITY"



FUJAIRAH ANCESTRY THEATRE AND MUSEUM
UAE
FUJAIRAH EMIRATE



RESIDENTIAL BUILDING
"SIMCO"
BIO BUILDING - PROTOCOLLO ITACA
CASTELLANA GROTTE
BA





RESIDENTIAL SOCIAL HEALTH CARE
OASI S.R.L
CASTELLANA GROTTA
BA





**RESIDENTIAL HEALTH CARE HOUSE
FOR DISABLED PEOPLE
"FIORIRE COMUNQUE"
CASTELLANA GROTTA
BA**



RESIDENTIAL SOCIAL HEALTH CARE
"EX OSTELLO"
ALBEROBELLO
BA





NEW SANTISSIMO - HALL & BANQUETING
TURI
BA



19TH CENTURY HISTORICAL BUILDING "CONSOLE"
CASTELLANA GROTTA
BA





TENUTA CAVALLERIZZA
GRAVINA
TA



RELAIS VILLA S. MARTINO
MARTINA FRANCA
TA





IL SANTISSIMO
TURI
BA





VILLA GLORIA
LAURETO - FASANO
TA



TRULLI SELVA DI FASANO
FASANO
TA







IL SANTISSIMO
TURI
BA



COUNTRY RESORT
OSTUNI
TA

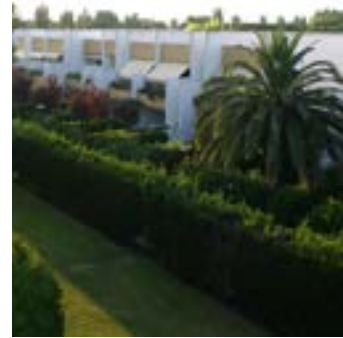


MASSERIA FERRAGNANO
LOCOROTONDO
BA





VICTOR VILLAGE
UGENTO
LE





PALAZZO STORICO
CASTELLANA GROTTE BA





IL SANTISSIMO
TURI
BA





COUNTRY GARDEN
PUGLIA



COUNTRY RESORT
OSTUNI
BR



RELAIS VILLA S. MARTINO
MARTINA FRANCA
TA



CREPERIE: "GIRONE DEI GOLOSI"
CEGLIE MESSAPICA BR



MINISTRY OF INTERIORS PALACE
JEDDAH
KINGDOM OF SAUDI ARABIA





MASTER EXHIBIT STAND
PARIS EXHIBIT: "BATIMAT" 2015
PARIS
FRANCE





KITCHEN & BATHROOM CONTEST
CASTELLANA GROTTA BA





**PIZZA & SPAGHI RESTAURANT
CASTELLANA GROTTE
BA**

ADN STUDIO - INTERIOR DESIGN | - PG 34





B&B ARCUÈVE
OSTUNI
BA





COUNTRY RESORT
OSTUNI
BR



**COUNTRY RESORT
OSTUNI
BR**



"JEEG"
CORTEN TABLE



LUNARIA
TABLE SETTING



FLOOR LAMP "NUR"



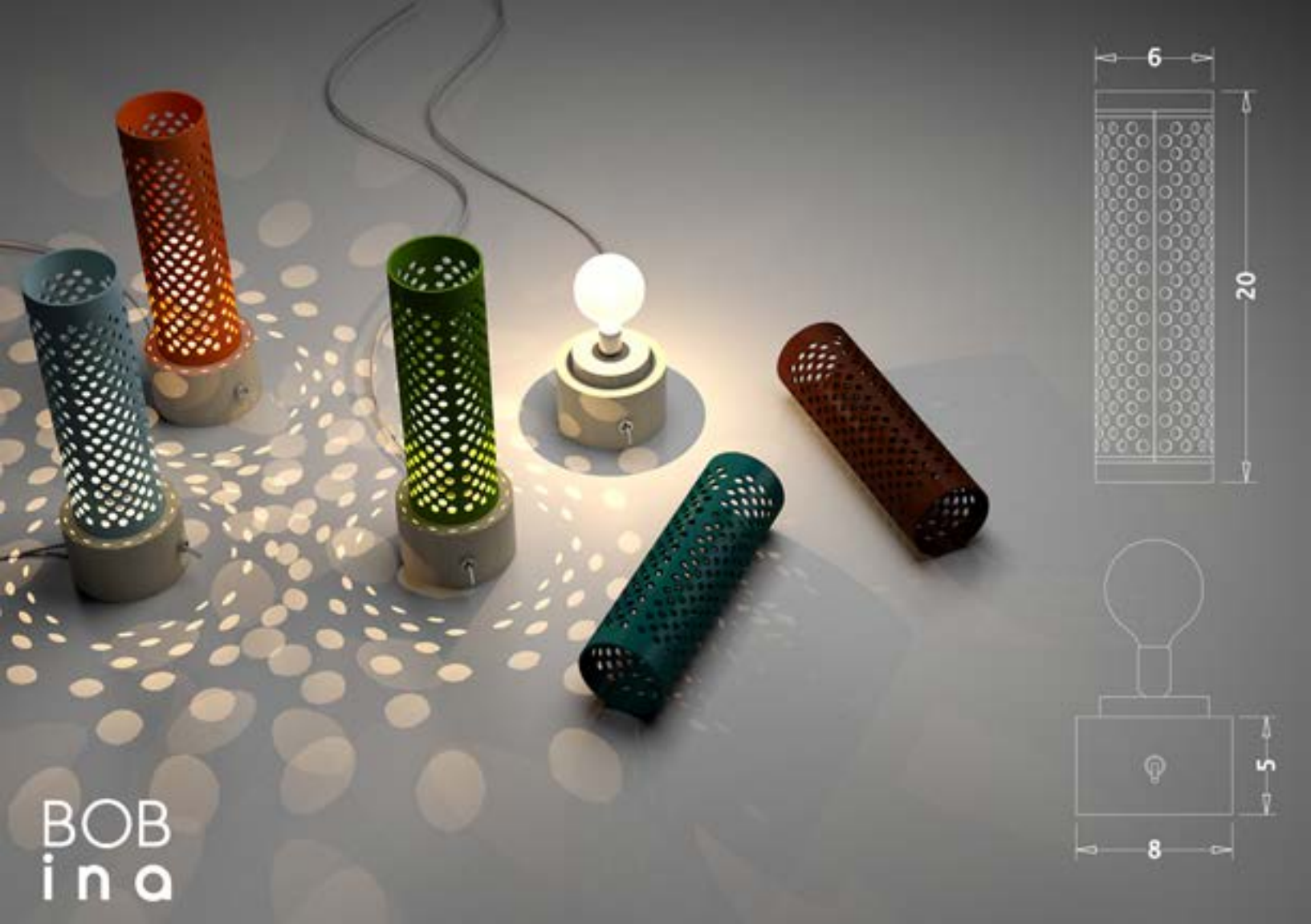


TABLE LAMP **BOB-INA**



URBAN AREA P.E.E.P.
CASTELLANA GROTTE
BA

CITY PUBLIC PARK
CASTELLANA GROTTE
BA





ARGONAUTI MARINA DOCK
PISTICCI
MT

**"AT THE BASIS OF ANY DESIGN THERE IS
CREATIVITY, NO MATTER WHAT THE SUBJECT
IS. AND CREATIVITY NEEDS TO BE SUPPORTED
BY TECHNICAL SKILLS THAT ALLOW IDEAS TO
TURN INTO CONSTRUCTION"**

SPECIALIZED DESIGN DEPARTMENT

STRUCTURAL DESIGN
ELECTRICAL DESIGN
MECHANICAL & PLUMBING DESIGN
LIGHTING DESIGN
SERVICE DESIGN

**"THE COORDINATION OF STRUCTURAL,
MECHANICAL, ELECTRICAL, AND MEP
SYSTEMS IS A MAJOR CHALLENGE FOR
COMPLEX BUILDINGS.
THIS MULTIDISCIPLINE EFFORT REQUIRES
KNOWLEDGE REGARDING EACH SYSTEM OVER
THE PROJECT LIFE CYCLE."**

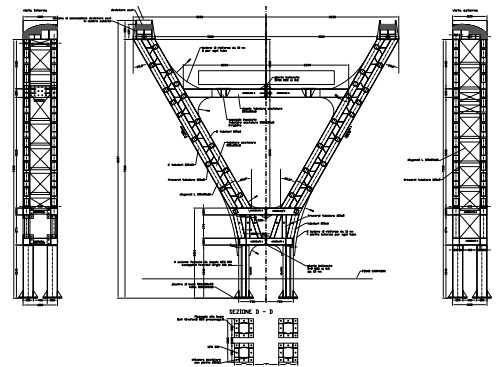


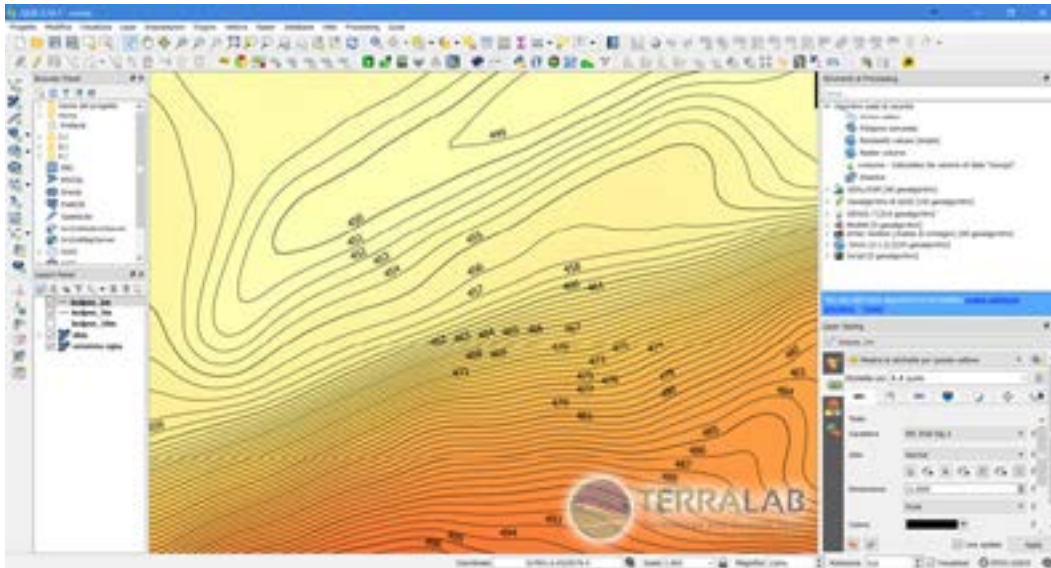
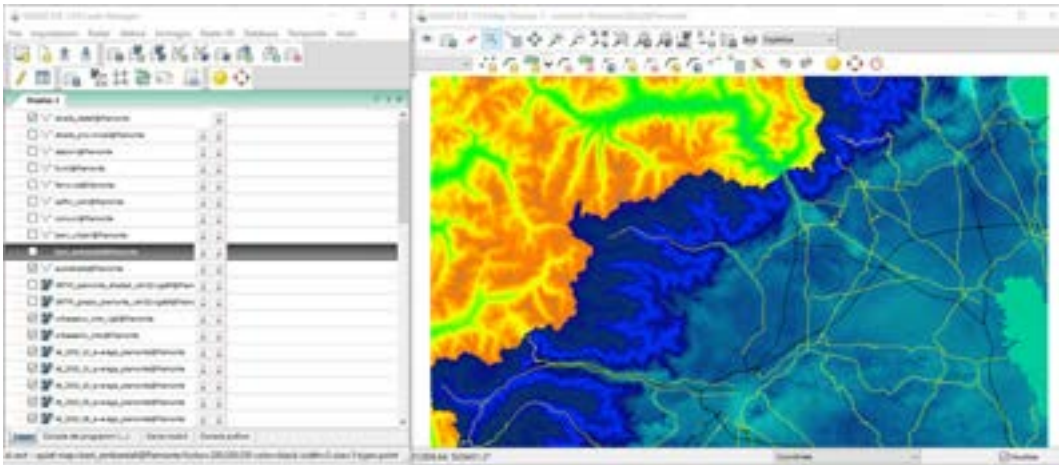
MINISTRY OF INTERIORS PALACE
JEDDAH
KINGDOM OF SAUDI ARABIA



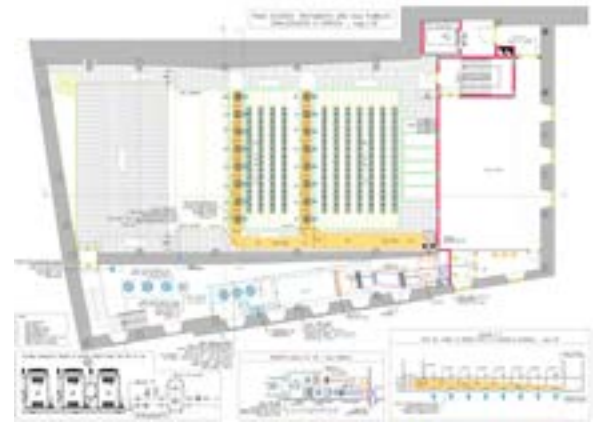
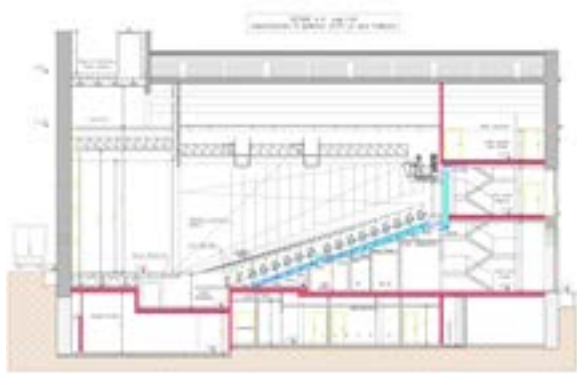


WALKWAY PEDESTRIAN CYCLE
SEGRATE MI

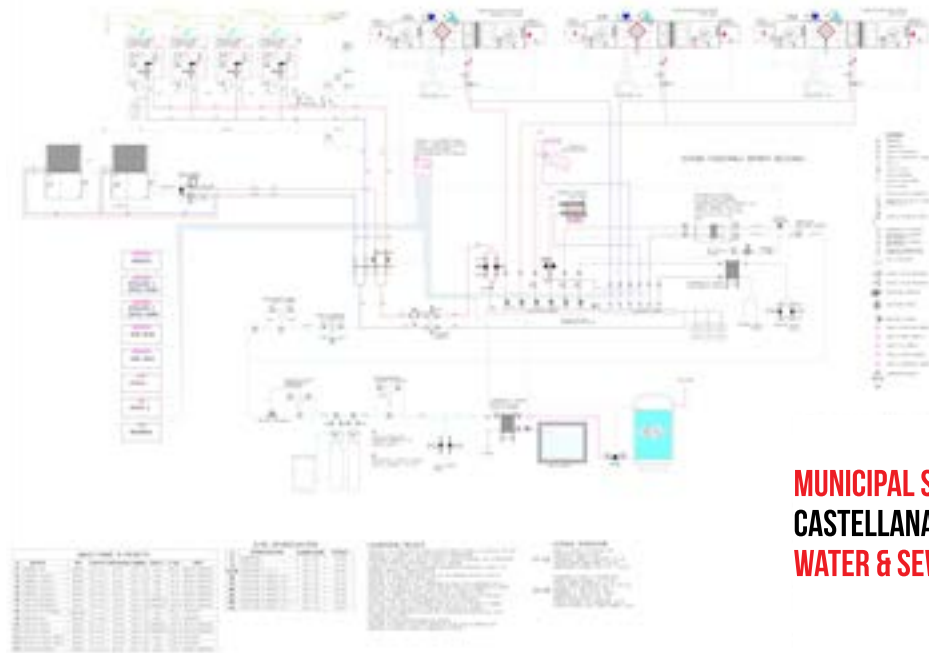




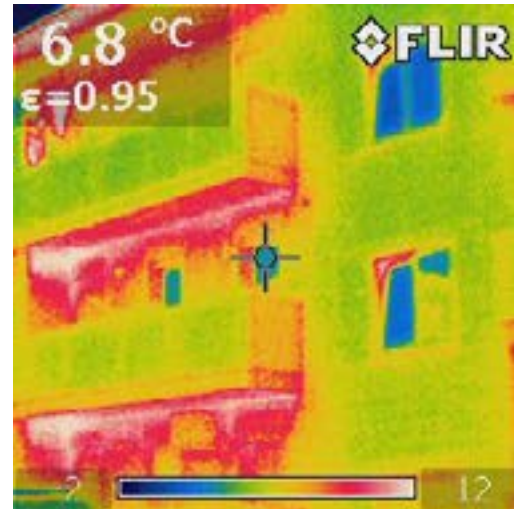
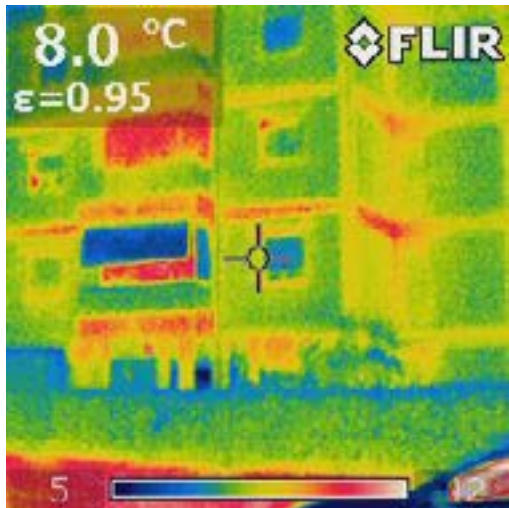
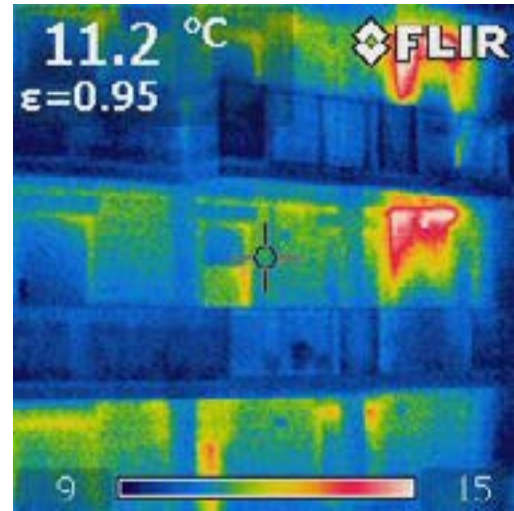
**GEOLOGICAL SURVEY IMAGES
MADE THROUGH S.A.P.R.**



**MUNICIPAL THEATRE
PUTIGNANO
BA
FIRE ESCAPES PLANTS**



**MUNICIPAL SWIMMING POOL
CASTELLANA GROTTA BA
WATER & SEWER SYSTEM**



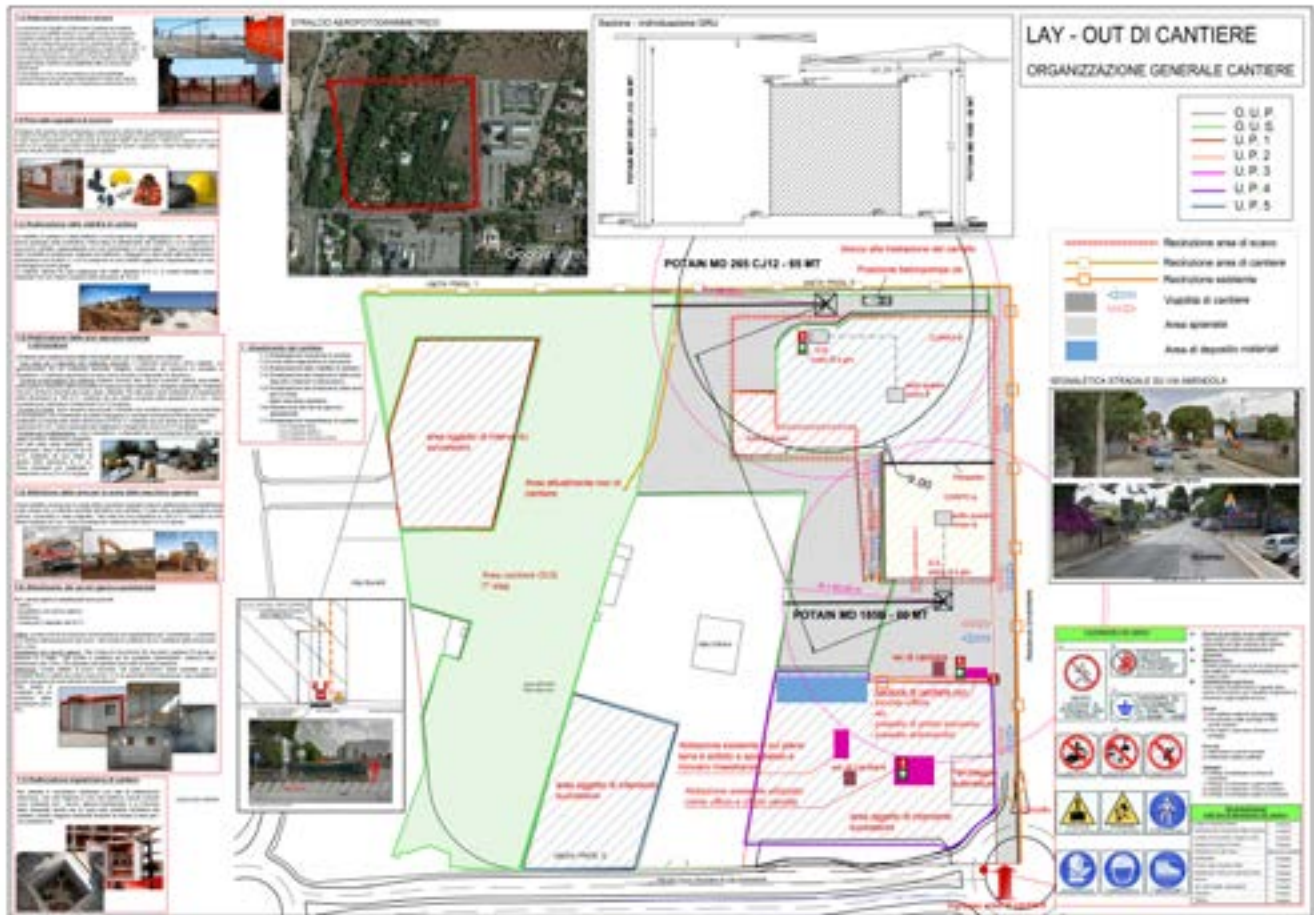
**RESIDENTIAL BUILDING
CASTELLANA GROTTA BA
ENERGY ANALYSIS AND THERMOGRAPHIC INVESTIGATION**

**"ALL CONSULTANTS, ARCHITECTS,
STRUCTURAL AND MEP CONSULTANTS,
LANDSCAPE ARCHITECTS, ETC,
WORK IN CONJUNCTION.
IN LARGE PROJECTS THIS COORDINATION
IS MANAGED BY THE
PROJECT MANAGEMENT TEAM"**

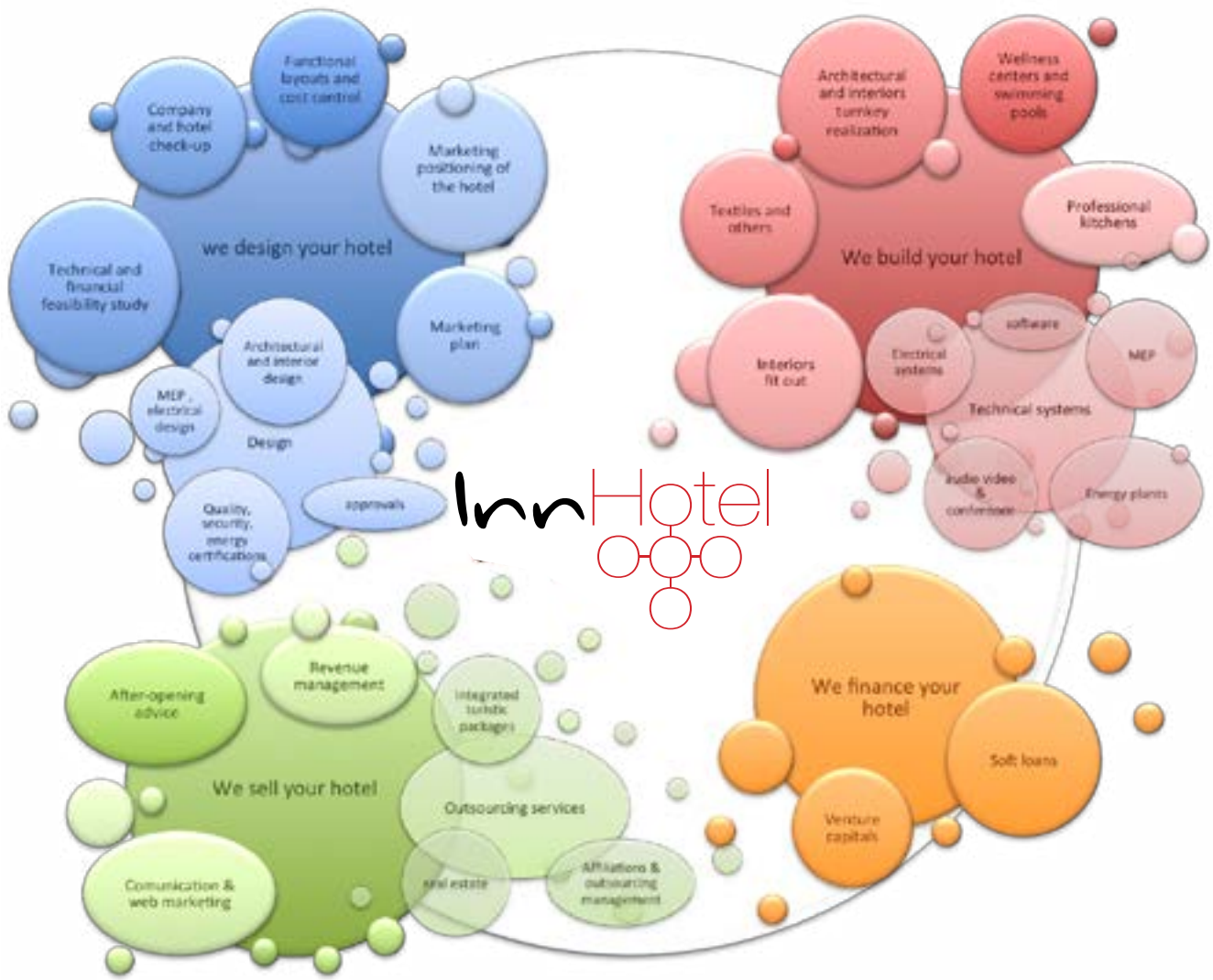
TECHNICAL ADVICE

LEGAL COUNSEL & CONTRACT ADVICE
FINANCE FACILITIES & CAPITALS
AGRONOMIC SERVICES
GEOLOGICAL INVESTIGATIONS
HEALTH & SAFETY ADVICE
ENVIRONMENTAL CONSULTING SERVICES
TOURISM CONSULTING SERVICES

"PLANNING AND SUPPORTING THE
DEVELOPMENT OF TEAM WORKING CAPABILITY
THROUGH CONSIDERATION OF TASK TYPE,
SIZE, DURATION, DISCIPLINES INVOLVED, TEAM
SIZE, ROLES AND SELECTION"



INED SRL RESIDENCES
BARI
BA
HEALTH & SAFETY PLAN



INNHOTEL - ADN STUDIO TOURISM DEPARTMENT
ENHANCING SERVICES AND SOLUTIONS
FOR THE HOSPITALITY WORLD

1 – We Design Your Hotel

we take care of the complete design, business sustainability and marketing positioning of your hotel:

- Company And Hotel Check-Up
- Marketing Positioning & Plan
- Technical And Financial Feasibility Study
- Functional Layouts And Cost Control
- Architectural, Landscape & Interior Design



2 – We Finance Your Hotel

we take care of the capitals for the realization your hotel

3 – We Build Your Hotel

we take care of the ‘turnkey’ realization of your hotel facilities, furniture etc:

- Selecting Of The Contractors Network Team
- Analysis of the Technical Economical Offers
- Verification and Budgeting ff Construction Standards
- Timing, Contracts And Project Management
- Site Management
- Administrative Assistance
- Quality, Budget & Time Control
- Final Certifications

4 – We Sell Your Hotel

we take care of the management needs and commercialization of your structure:

- Revenue Management And Training
- Communication And Web Marketing
- Affiliations And Outsourcing Management
- After Opening Advice
- Training & Recruitment
- Real Estate Investments



AGRONOMIC SERVICES - PUBLIC GREEN AREAS & DRY WALLS
ALBEROBELLO
BA

"AN EFFECTIVE MANAGEMENT SYSTEM SAYS A GREAT DEAL ABOUT YOUR ORGANISATION. IT SHOWS YOU ARE DEDICATED TO OPTIMISING YOUR OPERATIONS. IT DEMONSTRATES YOUR COMMITMENT TO QUALITY, SAFETY AND SECURITY. IT PROVES YOU HAVE FULL VISIBILITY OF YOUR PROCESSES AND RESOURCES. IT UNDERLINES YOUR COMMITMENT TO SUSTAINABILITY"

CERTIFICATIONS AUDITS

FIRE PREVENTION CERTIFICATION
ENERGY CERTIFICATION
HEALTH & SAFETY CERTIFICATION
ENVIRONMENTAL CERTIFICATION
ACUSTICAL ANALYSIS & CERTIFICATION

"A COMMITMENT TO A GLOBAL IMPROVEMENT
AIMED AT ACHIEVING SAFETY AND WELFARE
OF WORKERS, QUALITY OF PRODUCTS
AND PROCESSES, AND RESPECT FOR THE
ENVIRONMENT"

THE TEAM

Arch. Fabio Valenza
Arch. Vincenzo Mancini
Arch. Marco Matarrese
Eng. Stefano Elefante
Arch. Dino Lorusso
Atty Lia Airò

Senior Architect, Architecture & Interior Design Manager
Senior Architect, Architecture & Urban Design Manager
Senior Architect, Architecture & Interior Design Manager
Senior Engineer, Design & Site Management
Senior Architect, Architecture & Product Design Manager
Senior Attorney, Urban Development Law and Contract Specialist

THE NETWORK

Designer Bepi Povia
Arch. Graziana Cito
Arch. Nicoletta Guarini
Arch. Francesco Pascale
Arch. Alessia Manghisi
Eng. Michele Scavo
Eng. Edoardo Morelli
Eng. Domenico Sgobba
Eng. Michele Carrieri
Eng. Rosanna Cisternino
Geologist Salvatore Laurita
Dr. Agr. Angela Bellino
Dr. Giovanni Birardi

Senior Landscape Designer, Architecture & Interior Design Manager
Architect, Architecture, Product design, Education, BIM
Architect, Architecture, Product design, BIM
Architect, Architecture, Interior Design, 3D Modeling
Architect, Architecture, Interior Design, 3D Modeling
Engineer, Design & Structures
Senior Engineer, Electrical & Fire-escape Plants
Senior Engineer, MEP & Structures
Senior Engineer, Structural Design
Senior Engineer, Security Manager
Senior Geologist
Senior Agronomist
Chartered Accountant, Tax & Administrative Advising

THE TECH. & SCIENT. COMMITTEE

Arch. Nicola Morelli
Dr. Giovanni Colonna
Eng. Angela Genco
Geologist Paolo Giannandrea
Dr. Franco Bellino

Senior Architect, Professor MSO Aalborg University
Tourism, Hospitality and Ho.Re.Ca. Consultant & Manager
Senior Engineer, Innovation and Sustainable Development
Senior Geologist, PhD Geologist in Earth Sciences, University of Bari
Senior Agronomist, Regional Department of Agriculture



Arch. Fabio Valenza
Senior Architect,
ADN Studio Network Founder,
Architecture & Interior Design Manager



Arch. Vincenzo Mancini
Senior Architect,
Architecture & Urban Design Manager



Atty Lia Airò
Senior Attorney,
Urban Development Law
& Contract Specialist



Arch. Marco Matarrese
Senior Architect,
Architecture & Interior Design Manager



Eng. Stefano Elefante
Senior Engineer,
Design & Site Management



Arch. Dino Lorusso
Senior Architect,
Architecture & Product Design Manager



Designer Bepi Povia
Senior Landscape Designer,
Architecture & Interiors Design Manager



Arch. Nicoletta Guarini
Senior Architect,
Architecture, Interiors & Product Design



Arch. Francesco Pascale
Architect
Architecture,
Interior Design & 3D Modeling



Eng. Edoardo Morelli
Senior Engineer,
Electrical & Fire Escape Plants



Arch. Graziana Cito
Senior Architect,
Architecture, Interiors & Product Design



Arch. Alessia Manghisi
Architect
Architecture,
Interior Design & 3D Modeling



Eng. Michele Carrieri
Senior Engineer
Structural Design



Eng. Rosanna Cisternino
Senior Engeneer,
Security Manager



Eng. Domenico Sgobba
Senior Engineer,
MEP



Dr. Giovanni Birardi
Senior Accountant
Chartered Accountant, Financial
Advisoring



Dr. Salvatore Laurita
Senior Geologist



Dr. Angela Bellino
Senior Agronomist



Eng. Michele Scavo
Engineer,
Civil & Structures



Dr. Giovanni Colonna
Tourism, Hospitality and Ho.Re.Ca.
Consultant & Manager



Geologist Paolo Giannandrea
Senior Geologist, PhD Geologist in
Earth Sciences, University of Bari



Dr. Franco Bellino
Senior Agronomist, Regional
Department of Agriculture



Arch. Nicola Morelli
Professor MSO Aalborg University,
Service design



Eng. Angela Genco
PhD in Engineering for Innovation and
Sustainable Development.





OUR HOMEBASE Directional Center "Edes"

The directional centre is an architecture easy integrating into the environmental context. The curved shape of building is inspired by an "opening" concept towards the surrounding environment, relating to the external environment directly.

We have chosen local traditional materials and colours to reduce the environmental impact. The building and the filtering wings, realized in reinforced concrete, are white. On the contrary, services are covered in local limestone. The project is realized on a 2860 square meter with a total volume of 4560 cubic.

Contacts:

ADN STUDIO
Strada Provinciale 237, n°3
Castellana Grotte 70013
info@adnstudio.it
www.adnstudio.it



ADN ARCHITECTURE &
DESIGN
NETWORK
STUDIO



ADN - Architecture & Design Network Studio
right reserved - www.adnstudio.it

